



ارائه شده توسط:

سایت ترجمه فا

مرجع جدیدترین مقالات ترجمه شده

از نشریات معتبر



Opinion leaders selection in the social networks based on trust relationships propagation

Samad Mohammad Aghdam, Nima Jafari Navimipour*

Department of Computer Engineering, Tabriz Branch, Islamic Azad University, Tabriz, Iran

Received 26 November 2015; revised 13 February 2016; accepted 14 February 2016

Abstract

Today, social networks become very popular and include a wide range of users. In these networks, some users have a great influence ratio to other users who are called opinion leaders. They can use their influence on many issues, such as political, economic, education, social, etc. In this paper, we propose a new framework to select the opinion leaders in online communities. The framework uses the trust relationship between the users and evaluates the total trust value (TTV) of primary opinion leaders between other users to select the highest of them. According to the obtained results, the proposed framework in comparison of top in-degree method, top out-degree method, top centrality method and hybrid IO-degree method provides better results in the social network marketing (SNM) campaigning.

© 2016 The Authors. Production and hosting by Elsevier B.V. on behalf of University of Kerbala. This is an open access article under the CC BY-NC-ND license (<http://creativecommons.org/licenses/by-nc-nd/4.0/>).

Keywords: Opinion leader; Social networks; Trust; Similarity; Sociality

1. Introduction

Online communities are becoming more and more popular as it is shown by the growth on the number of their members [8]. Also, the popularity of social networks has led to new ideas and caused to use that in different cases, like combining with Cloud/Grid computing [17,18,20,22,24,28], Peer-to-Peer networks [19], Expert Cloud [2,17,18,21,23], cooperative games [3] or in therapeutical cases [1]. All the registered users in these communities are not enough honestly or reliable. When information is to be shared or a user is

interested in knowing the opinions of others, uncertainty might be a problem. It would be desirable to have a tool that aids users in overcoming this uncertainty, where the trust plays an essential role [8].

Online public opinions closely are connected with the various contradictions and sensitive issues in the social transformation period. In the process of public opinion transmission, any Internet users expressed their ideas who can be familiar with computers operating in a particular way, such as participating in the topic discussion or social networks Ref. [32]. Opinion leaders play an important role in improving communication and encouraging group members in order to have a greater level of information exchange Refs. [4,33]. Their superior status, education, and social prestige enabled them to influence followers, which

* Corresponding author. Tel.: +98 9144021694; fax: +98 4134203292.

E-mail address: jafari@iaut.ac.ir (N. Jafari Navimipour).

Peer review under responsibility of University of Kerbala.

<http://dx.doi.org/10.1016/j.kijoms.2016.02.002>

2405-609X/© 2016 The Authors. Production and hosting by Elsevier B.V. on behalf of University of Kerbala. This is an open access article under the CC BY-NC-ND license (<http://creativecommons.org/licenses/by-nc-nd/4.0/>).

are element key to making the connected community and make the best group performance. With attention to prominent and effective diffusion strategy, using opinion leaders has been studied in many fields such as anthropology, sociology, and business Refs. [6,34]. Also, opinion leaders have demonstrated significant impact in political participations and discussed to sustain any prolonged political action Ref. [35]. Opinion leaders have identified a prerequisite for guiding and interfering public opinion on the Internet due to the identification of opinion leaders is very important and meaningful [14].

In this paper, we introduce a framework to increase the accuracy of opinion leaders' selection method in the social networks. At the first step, we have removed the duplicate comments, self-trust statements, and troll's opinions, then try to select the opinion leaders that have a maximum amount of trust between users.

The rest of this paper is organized as follows. Section 2 discusses the related works; Section 3 presents the research framework; Section 4 presents discussions and comparison of the proposed mechanism with the existing methods; in Section 5, concludes the paper with some suggestion for future research directions.

2. Related works

In recent years, the identification of opinion leaders is a subject which has been a great interest. So far, some researchers were studied on opinion leaders where first of them is situated within the field of sociology. Numerous studies such as [5,10,16,26,29,30] have been conducted in order to understand the concept of opinion and characteristics of leaders distinguishing them of their followers. The studies on opinion leader identification can be divided into two parts: (1) link-based opinion leader identification methods that consider the social interactive structure of the network; and (2) mixture of opinion leader identification methods that combine the social link information with semantic-based information embodied in documents [9,12,15,27].

As an example of link-based opinion leader selection, Carson, Tesluk et al. [4] have identified opinion leaders with an excellent edge rank algorithm based on excellent network theory, applied it to rank excellent edges and used the ranking result to identify opinion leaders in opinion excellent network model. Alternatively, Li, Ma et al. [13] have proposed an improved combined framework identifying the

opinion leader in online learning communities, which ranked opinion leaders based on four distinguishing features: expertise, novelty, influence, and activity. Furthermore, the performances of opinion leaders were further investigated in terms of longevity and centrality.

In another study, Cho, Hwang et al. [6] have found that those opinion leaders are the optimum marketing choice in terms of diffusion speed and maximum cumulative number of adopters, used a social network method and threshold model and conclude that opinion leaders with a high sociality and centrality (users who have high degree of connections to other people) are the best ones for fast diffusion.

In case of SNM, about 78% of the trust of customers to the social network communities are based on opinion leaders' recommendations for products and services [25]. So, how to identify the opinion leaders effectively is the key to raise sales and brand awareness. In sales and marketing field, some studies focus on developing various indexes such as in-degree, out-degree, betweenness and closeness in social network analysis (SNA) to identify opinion leaders. These studies are interested in identifying opinion leaders who will forward be marketing messages to other users via their trust and distrust networks. Moreover [11] Table 1 provides side by side comparison of the reviewed methods.

Trust can assist entities making decisions before establishing collaborations. It is desirable to simulate the behavior of users as in social environments where they tend to trust users who have common interests or share some of their opinions, i.e., users similar to them. In this direction Ref. [36] in a research introduce the concept of context similarity among entities and derive a similarity network. Then, it defines a trust model that allows to establish trust along a path of entities. Also, many other methods for evaluating trust in the social community are proposed, for example, in Ref. [11] three methods (Knowledge Score, Matching coefficient, Jaccard coefficient) which obtain trust degree between users in social networks are introduced. Which knowledge score reflect both the evaluation score and the intensity of a relationship between two users and two other methods are acting based on the structural and social similarity between two users.

3. Research framework

For selecting opinion leaders in the social network, at first, we must have access to relationships between

Table 1
Side by side comparison of the reviewed methods.

Method name	Mechanism	Advantages	Disadvantages
Super edge rank algorithm	Identifying opinion leaders with a super edge rank algorithm based on super network theory	High accuracy	High complexity
Combined framework	Identifying opinion leaders based on four distinguishing features: expertise, novelty, influence, and activity	High accuracy	Relatively complexity
A social network approach and threshold model based on distance	Finding opinion leaders with high sociality, whereas those with high distance centrality, are the best ones.	Good accuracy	Relatively complexity
Top centrality	Choosing the users which have a high degree of connections with other people	Ease of obtaining information from the network, simplicity	low accuracy
Top in-degree	Using a social network method, users with highest social relations	Ease of obtaining information from the network, simplicity	The probability of not selecting more appropriate opinion leaders
Top out-degree	Using a social network method, users with highest social relations	Ease of obtaining information from the network, simplicity	The probability of not selecting more appropriate opinion leaders
Hybrid IO-degree	Using a social network method, users with highest social relations and threshold model	Reasonable results, ease of obtaining information from the network	Relative accuracy and determines the value of threshold in different cases

users and data sets of the social network. However, it is possible that some of these data may not be accurate. So, we should first remove incorrect data and then obtain trust relationships to select opinion leaders. The research framework is illustrated as a graphical form in Fig. 1.

At the first step, preliminary data filtered to obtain accurate results; then, at the second step, opinion leaders identified, which step one divided into three parts and step two divided into two parts. The rest of this section comprehensively defined these steps.

3.1. Data filtering

To avoid of error causes and losing of accuracy for the results, the data were filtered. Filtering of data removes self-trust statements, duplicate comments and troll's comments by employment three components as follows.

3.1.1. Removing self-trust statements

The order of self-trust statements are those comments which a person gave to itself (e.g., user “x” issues “y” time's self-trust statements), so must remove this cases. Algorithm 1 shows how to remove the self-trust statements. For understanding the algorithm, we must know a comment structure. The structure of a comment is represented in Table 2.

Algorithm 1. Removing the self-trust statements

- 1: P_X is an array list, include X part of comments.
 - 2: P_Y is an array list, include Y part of comments.
 - 3: P_Z is an array list, include Z part of comments.
 - 4: STSC includes a number of self-trust statements.
 - 5: **for** ($N = 0$; $N < =$ length of comments ; $N++$)
 - 6: **if** ($P_X N == P_Y N$) **then**
 - 7: remove $P_X, P_Y, P_Z N$
 - 8: $N --$
 - 9: STSC ++
 - 10: **end if**
 - 11: **end**
-

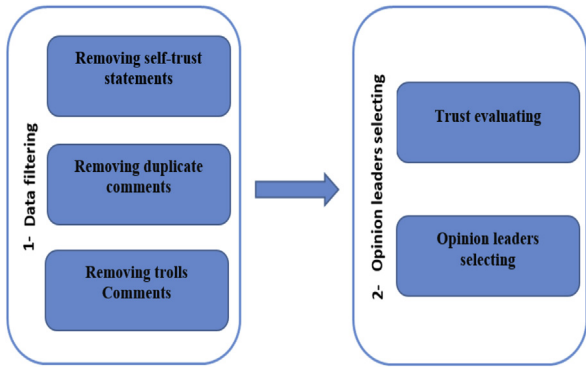


Fig. 1. The proposed research framework.

Table 2
The structure of a comment.

X	Y	Z
From	To	Value (-1 or +1)

3.1.2. Removing duplicate comments

Another irrelevant data duplicate comments, which includes duplicate comments for a user (e.g., User “x” issues a trust statement “y” times (More than one time) for user “z”), so this will be correct. Algorithm 2 shows that how the duplicate comments have been deleted.

3.1.3. Removing trolls' comments

In Internet slang, trolls are persons that sow discord on the Internet by starting arguments or upsetting people, posting inflammatory, extraneous, or off-topic messages in an online community with the deliberate intent of provoking readers into an emotional response. Moreover, they disrupt normal on-topic discussion. Here, we are going to delete trolls' comments. To counteract the effects of troll comments, we practice in the following way.

So for trolls' recognition Eq (1) is defined.

$$\text{Troll} = \frac{\alpha \times (\text{in} - \text{degree}^-(i)) + (1 - \alpha) \times (\text{out} - \text{degree}^-(i))}{\text{All in and out comments}(i)} \quad (1)$$

where $(\text{in} - \text{degree}^-(i))$ and $(\text{out} - \text{degree}^-(i))$ represent negative in and out comments of user i and $\alpha = 0.7$, which increases the value of negative input comments toward negative output comments and all in and out comments (i) represent all negative and positive comments of user i which taken and gave to

another user. The result of Eq (1) is a digit between 0 and 1 and the user who this digit for it more than a threshold (in this paper 0.33), is considered to be a troll. Therefore, the comments by this user to other users are removed. Algorithm3 shows how to remove the trolls' comments.

3.2. Opinion leaders' selection

In this paper, opinion leaders are obtained using a trust metric and measuring the strength of the trust relationships among users. Namely, with obtaining the total degree of trust for each user, we identified which is that a leader or not; this action takes place in two stages evaluating trust and opinion leaders selecting.

3.2.1. Trust evaluating

Our method uses the trust relationship between users and evaluates the total trust value between users to select best opinion leaders. For opinion leaders' selection, in the first step, we adopt a trust metric to estimate the strength of trust relationships among users on social networks.

The adopted metric to measure the strength of trust relationships are Jaccard coefficient (JC) [11] based on the structural and social similarity between two users. According to [31], there exist a positive relationship between the similarity among users and the strength of trust established among users. For analysis, we use the number of users whom both users, i and j trust to estimate social similarity (and the strength of trust) between users, i and j . Then, we transform the value of JC metric between 0 and 1 with computing a ratio of the number of users who are trusted by both users, i and j to the number of users that are trusted by either a user i or a user j , but not both. We define this metric in Eq (2).

$$(\text{JC}) = \frac{|\text{out} - \text{digree}(i) \cap \text{out} - \text{digree}(j)|}{|\text{out} - \text{digree}(i) \cup \text{out} - \text{digree}(j)|} \quad (2)$$

where $|\text{out} - \text{digree}(i) \cap \text{out} - \text{digree}(j)|$ represents the number of users who are trusted by both users i and j and $|\text{out} - \text{digree}(i) \cup \text{out} - \text{digree}(j)|$ represents the

Algorithm 2. Removing the duplicate comments

```

1: Px is an array list, include X part of comments.
2: Py is an array list, include Y part of comments.
3: Pz is an array list, include Z part of comments.
4: DCC is including number of duplicate comments.
5: for (N = 0 ; N < = length of comments; N++)
6:   for (M = N+1 ; M < = length of comments; M++)
7:     if (Px N == Px M and Py N == Py M and Pz N == Pz M)
       then
8:       remove Px, Py, Pz N
9:     M --
10:    DCC ++
11:   end if
12: end
13: end

```

Algorithm 3. Removing the trolls comments

```

1: TLIS is an array list, include user id of trolls.
2: Px is an array list, include X part of comments.
3: Py is an array list, include Y part of comments.
4: Pz is an array list, include Z part of comments.
5: TCC is including a number of trolls' comments.
6: for (N = 0 ; N < = length of TLIS ; N++)
7:   for (M = 0 ; M < = length of comments ; M++)
8:     if (TLIS N == Px M) then
9:       remove Px, Py, Pz M
10:    TCC ++
11:   end if
12: end
13: end

```

number of users who are trusted by either a user i or a user j , but not both [7,11].

3.2.2. Opinion leaders selecting

To select N opinion leaders among M users, in the first step, to reduce the computation of trust relationships and obtain better results, primary selection of opinion leaders takes place using four methods, which introduced in the Section 2, (Hybrid IO-degree, top out-degree, top in-degree and top centrality methods). So $N \times 3$ top users (three times greater than requested opinion leaders, the number 3 are obtained from the experiments) elected with this four methods, which finally we choose the method that gives the best results as a suggested method. Top in-degree, top out-degree, hybrid IO-degree and top centrality methods respectively obtained from the Eqs. (3)–(5) [11] and (6) [6].

$$\text{Top in – degree} = \text{Max (in comments)} \quad (3)$$

Where in comments include positive and negative comments which a user is taken from the other and max

mean is, that user which have a maximum in a comment.

$$\text{Top out – degree} = \text{Max (out comments)} \quad (4)$$

Where out comments include positive and negative comments which a user gave to other and max mean is, that user which have a maximum out comment.

$$\text{Hybrid IO – degree} = \alpha \times (\text{in – degree}) + (1 - \alpha) \times (\text{out – degree}) \quad (5)$$

Where $\alpha = 0.7$, where α increases the value of input comments toward output comments.

$$\text{Top centrality} = \text{Max (in degree + out degree)} \quad (6)$$

Where it means that user has high sum of in and out comments.

In the second step, total trust value for each $N \times 3$ user with other users is calculated (For primary opinion leaders of four methods). Total trust value for user x is obtained by Eq. (7)

$$\text{Total trust value (TTV)} = \sum_{j=1}^n \frac{|out - degree(x) \cap out - degree(j)|}{|out - degree(x) \cup out - degree(j)|} \quad (7)$$

Out-degree includes both positive and negative comments, so the total trust value for each $N \times 3$ top user is calculated by using positive and negative out-degree using (7) and then divide to the number of all users for obtaining a digit to total trust value between 0 and 1.

In the last step, results are sorted in descending order to determine the order of $N \times 3$ users. Then, N top opinion leaders are elected.

4. Discussion and comparison

According to research framework, data filtering is applied to data set, then the opinion leaders are selected with all introduced methods, and in the last, numbers of returned confiding users are calculated for all methods, and the results are compared with each other. A notable point is that, since the trust metric acting based on the social similarity, so when we select the opinion leaders with top total trust value, it means that selected opinion leaders in addition to the primarily selected opinion leaders have highest similarity and sociality degree among other users.

4.1. Dataset

Used data sets are collected from opinions website which is a social network site where each user can rate reviews written by other users and generally this data sets included the relationships of trust between opinions website users. Data sets are publicly available at <http://snap.stanford.edu/data/soc-Epinions1.html>. ~100,000 opinion between ~15,000 users of the data sets used throughout this paper, the structure of a comment represented in Table 2.

4.2. Simulation environment

The used environment to simulate this investigation is C#. An important reason for choosing it is the structure of arrays in this language, which are defining as one piece in main memory and causing to increase the processing speed.

4.3. Results of data filtering

To increase the accuracy of the results, the dataset is filtered. Fig. 2 represents the number of removed comments in the cases of self-trust statements, duplicate comments or trolls comments.

As shown in Fig. 2, through all comments, trolls comments included 6123, duplicate comments included 1730 and self-trust statements included 1250 comments.

4.4. Extracting total trust value

After clearing data, we identify 100 opinion leaders with highest trust values according to the proposed framework that described in Section 3. Table 3 shows the obtained total trust value for 10 users.

The trust value for each user, as shown in Table 3, represents the same total trust value for that user.

4.5. Comparison

After opinion leaders selection with all methods returned real opinion leaders for each method obtained, and results displayed in Fig. 3.

Fig. 3 represents returned percent of real opinion leaders for all methods from 100 selected opinion leaders by each method. As shown in Fig. 3, TTV method (hybrid IO-degree) returned best results.

In the SNM, the manager uses an opinion leader for responding the campaigns. Furthermore, the opinion

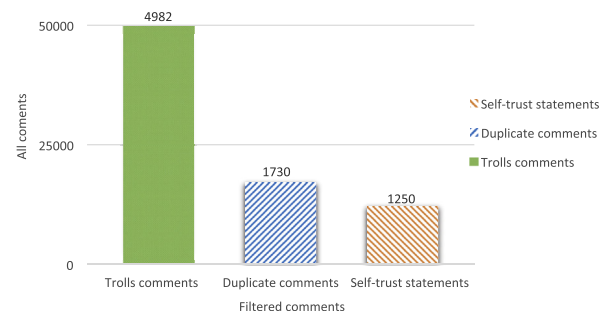


Fig. 2. The numbers of filtered comments.

Table 3
Obtained total trust value for 10 users (data sets from (<http://www.epinions.com>)).

Primary selection using hybrid IO-degree method			Primary selection using the top out-degree method		Primary selection using the top in-degree method		Primary selection using top centrality method	
User id	Trust value		User id	Trust value	User id	Trust value	User id	Trust value
1	26259984260	0.0521	19761434500	0.0514	26259984260	0.0521	19761434500	0.0514
2	19761434500	0.0514	01397086596	0.0464	19761434500	0.0514	00000453486	0.0431
3	29600878468	0.0456	29600878468	0.0456	32676614020	0.0442	00000484786	0.0433
4	03267664020	0.0441	32676614020	0.0442	00000484786	0.0433	00000261899	0.0422
5	00000312291	0.0427	00000031291	0.0424	00000261899	0.0422	00000394444	0.0421
6	10286567300	0.0412	10286567300	0.0412	10286567300	0.0412	00000626193	0.0411
7	04936863620	0.0402	04936863620	0.0402	00000626193	0.0411	00000216022	0.0415
8	07340396420	0.0387	02983235620	0.0401	00000240913	0.0404	00000240913	0.0404
9	24187867012	0.0375	24187867012	0.0375	04936863620	0.0402	00000301396	0.0403
10	00000340335	0.0363	00755601284	0.0399	00000247911	0.0391	04936863620	0.0402

leaders forward marketing messages to other users. To determine whom users are attention to this messages and they become a real customer or confiding users, accordingly which people tend to trust other people that behave like them. We calculate the similarity between the opinion leaders and all other users and if the result of similarity degree for each user is more than a threshold, we have considered that user as an actual customer. We use Eq. (2) for extracting similarity between tow users. Similarity threshold in our study were (0.05).

For comparing the proposed method, we review four other ways for identifying the opinion leader, which include selecting users with top in-degree, top out-degree, top centrality and an optimal combination of two topological measures, in- and out-degree measure, to select a group of opinion leaders. Therefore, 100 top users were identified to compare the result of returned percent of confiding users of this method versus our TTV methods.

To compare the proposed method with other methods, percent of returned confiding users (percent

of all users) are calculated for opinion leaders by means of eight methods, including top in-degree, top out-degree, hybrid IO-degree [11], top centrality [6] and TTV methods. As shown in Fig. 3, TTV (hybrid IO-degree) is the best method among other TTV methods, so we choose it as a representative of TTV method. Fig. 4 represents the percent of returned confiding users using eight methods.

After calculating the trust of degree between selected opinion leaders using the eight methods, the result shows that the TTV (hybrid IO-degree) method with returning 29% of all users as confiding user (real customer) is the best method among top in-degree with 20%, top out-degree with 19%, hybrid IO-degree with 22%, top centrality with 15%, TTV (top in-degree) with 24%, TTV (top centrality) with 18% and TTV (top out-degree) with 23%. Furthermore, Fig. 5 represents the similarity degree sum of confiding users for selected opinion leaders by eight methods.

Similarity degree sum, including all similarity degree values of confiding users (real customer) for eight methods. In the other experiment, we changed the size

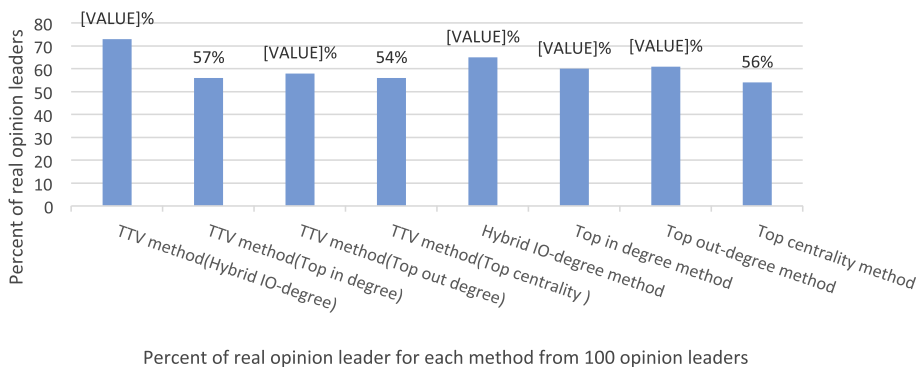


Fig. 3. Real opinion leader for each method.

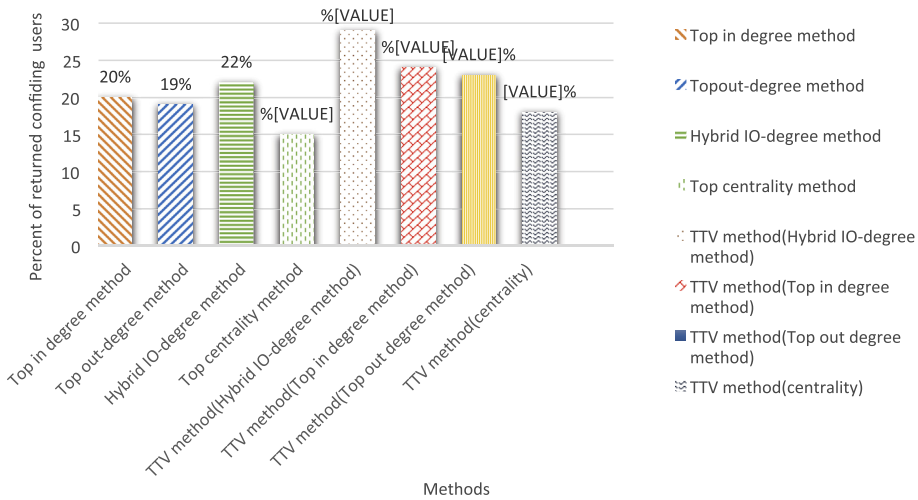


Fig. 4. Percent of returned confiding users.

of opinion leaders to more investigations. Fig. 6 represents the percent of returned confiding users to each method in the reference size of opinion leaders.

As shown in Fig. 5, in all methods, after increasing the size of opinion leaders to a certain range a small change is occurred. In addition, Table 4 shows the side-by-side comparisons between TTV and seven important methods in this domain in terms of using social relationships, using network topology analysis, using textual content, using removing trolls' effects, and trust relationships.

Table 4 represents the features used in the 8 methods through the 5 features. As the table shows, none of the methods except TTV used the removing trolls effects which increase the accuracy of the

primary data and trust relationships which improves the results. It should be noted, however, the TTV method uses these two features, in comparison with the super edged rank algorithm method which requires network topology analysis and combined framework method, is simpler and less costly.

5. Conclusions and future studies

In this paper, a new framework for identifying opinion leaders based on trust relationship among users is proposed. Identified opinion leaders can be used on many issues, such as political, economic, education, social and etc. In the proposed method, after filtering the values of data sets on three parts, consists of

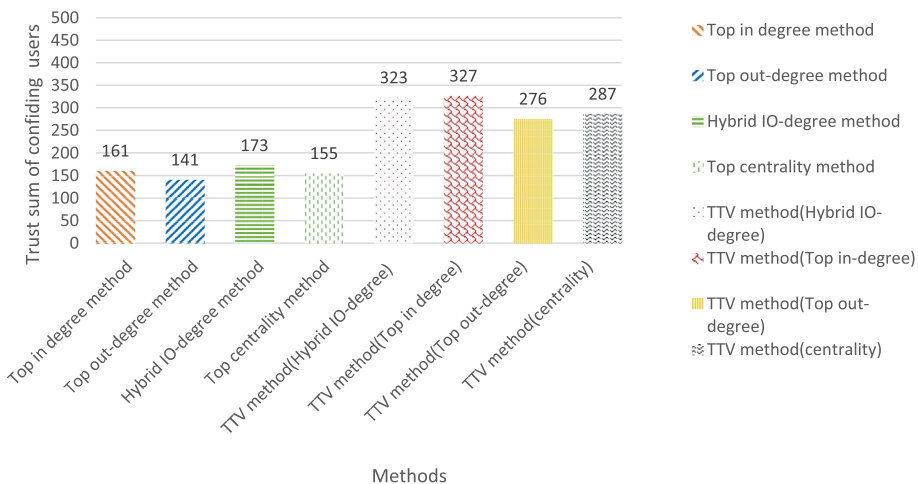


Fig. 5. The sum of similarity degree of confiding users.

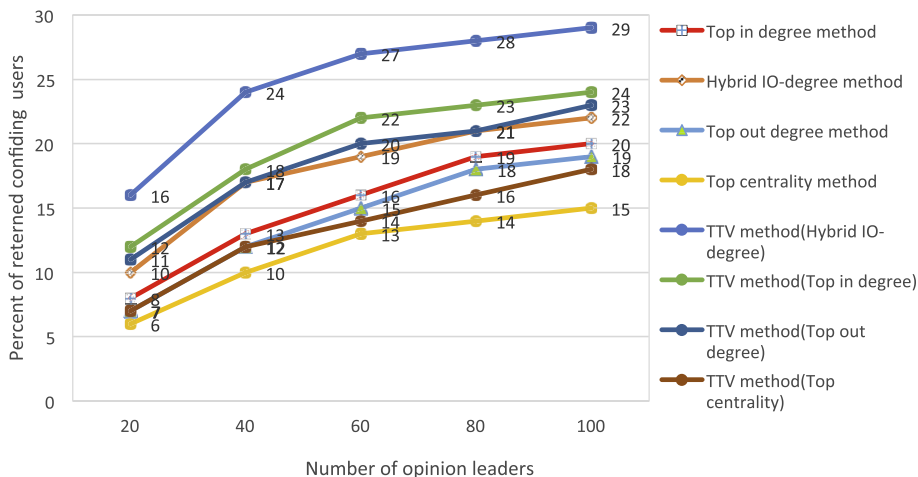


Fig. 6. Percent of returned confiding users to each method in the reference size of opinion leaders.

Table 4

The features of common methods in terms of using social relationships, using network topology analysis, using textual content, removing trolls effects, and using trust relationships.

Research	Using social relationships	Using network topology analysis	Using textual content	Removing trolls effects	Using trust relationships
Super edge rank algorithm [14]	✓	✓	✓	×	×
Combined framework [13]	✓	×	✓	×	×
A social network approach and threshold model based on distance [6]	✓	×	✓	×	×
Top in-degree [11]	✓	×	✓	×	×
Top out-degree [11]	✓	×	✓	×	×
Hybrid IO-degree [11]	✓	×	✓	×	×
Top centrality [6]	✓	×	✓	×	×
TTV	✓	×	✓	✓	✓

removing self-trust statements, duplicate comments, and trolls comments, our method identifies those users as opinion leaders which have a top total trust value by using two parts: trust evaluating and opinion leaders selection. The adopted metric to measure the strength of trust relationships is JC [11] based on the structural and social similarity between two users. So, in this research with calculating total trust value from users' comments, opinion leaders are identified. The results demonstrated that the returned percent of real opinion leaders (73% of real opinion leaders) and confiding users (29% of all users) using the proposed method is more than of those users selected by using the top in-degree method (20% of all users), top out-degree method (19% of all users), top centrality method (18% of all users), hybrid IO-degree (22% of all users) methods. As an extension of the current study, we like to use other trust metrics in the proposed method, for example, knowledge score

(KS) or matching coefficient (MC) [11]. Also, we have the interest to increase the accuracy of selecting the best opinion leaders by considering items like user rating and network topology.

References

- [1] A.M. Anaya-Arenas, et al., Relief distribution networks: a systematic review, *Ann. Operations Res.* (2012) 1–27.
- [2] M. Ashouraie, et al., Priority-based task scheduling on heterogeneous resources in the Expert Cloud, *Kybernetes* 44 (10) (2015).
- [3] D. Borrero, et al., Stable solutions for multiple scenario cost allocation games with partial information, *Ann. Operations Res.* (2014) 1–18.
- [4] J.B. Carson, et al., Shared leadership in teams: an investigation of antecedent conditions and performance, *Acad. Manag. J.* 50 (5) (2007) 1217–1234.
- [5] K.K. Chan, S. Misra, Characteristics of the opinion leader: a new dimension, *J. Advert.* 19 (3) (1990) 53–60.

- 10 *S.M. Aghdam, N. Jafari Navimipour / Karbala International Journal of Modern Science xx (2016) 1–10*
- [6] Y. Cho, et al., Identification of effective opinion leaders in the diffusion of technological innovation: a social network approach, *Technol. Forecast. Soc. Change* 79 (1) (2012) 97–106.
- [7] J.A. Colquitt, et al., Trust, trustworthiness, and trust propensity: a meta-analytic test of their unique relationships with risk taking and job performance, *J. Appl. Psychol.* 92 (4) (2007) 909.
- [8] C. Fernandez-Gago, Carmen, Isaac Agudo, Javier Lopez, Building trust from context similarity measures, *Comput. Stand. Interfaces* 36 (4) (2014) 792–800.
- [9] L.C. Freeman, Centrality in social networks conceptual clarification, *Soc. Netw.* 1 (3) (1979) 215–239.
- [10] T. Gnambs, B. Batinic, A personality-competence model of opinion leadership, *Psychol. Mark.* 29 (8) (2012) 606–621.
- [11] Y.S. Kim, V.L. Tran, Assessing the ripple effects of online opinion leaders with trust and distrust metrics, *Expert Syst. Appl.* 40 (9) (2013) 3500–3511.
- [12] J.M. Kleinberg, Authoritative sources in a hyperlinked environment, *J. ACM (JACM)* 46 (5) (1999) 604–632.
- [13] Y. Li, et al., An improved mix framework for opinion leader identification in online learning communities, *Knowledge-Based Syst.* 43 (2013) 43–51.
- [14] N. Ma, Y. Liu, SuperedgeRank algorithm and its application in identifying opinion leader of online public opinion supernetwork, *Expert Syst. Appl.* 41 (4) (2014) 1357–1368.
- [15] N. Matsumura, et al., Mining and characterizing opinion leaders from threaded online discussions, in: *Proceedings of the 6th International Conference on Knowledge-based Intelligent Engineering Systems & Allied Technologies*, 2002.
- [16] B. Mullen, et al., Salience, motivation, and artifact as contributions to the relation between participation rate and leadership, *J. Exp. Soc. Psychol.* 25 (6) (1989) 545–559.
- [17] N.J. Navimipour, A formal approach for the specification and verification of a trustworthy human resource discovery mechanism in the expert cloud, *Expert Syst. Appl.* 42 (15) (2015) 6112–6131.
- [18] N.J. Navimipour, *Task Scheduling in the Cloud Environments Based on an Artificial Bee Colony Algorithm*, 2015.
- [19] N.J. Navimipour, F.S. Milani, A comprehensive study of the resource discovery techniques in Peer-to-Peer networks, *Peer-to-Peer Netw. Appl.* 8 (3) (2014) 474–492.
- [20] N.J. Navimipour, F.S. Milani, Task scheduling in the cloud computing based on the cuckoo search algorithm, *Int. J. Model. Optim.* 5 (1) (2015) 44.
- [21] N.J. Navimipour, et al., Behavioral modeling and automated verification of a Cloud-based framework to share the knowledge and skills of human resources, *Comput. Ind.* 68 (2015) 65–77.
- [22] N.J. Navimipour, et al., Resource discovery mechanisms in grid systems: a survey, *J. Netw. Comput. Appl.* 41 (2014) 389–410.
- [23] N.J. Navimipour, et al., Expert Cloud: a Cloud-based framework to share the knowledge and skills of human resources, *Comput. Hum. Behav.* 46 (2015) 57–74.
- [24] A.H. Navin, et al., Expert grid: new type of grid to manage the human resources and study the effectiveness of its task scheduler, *Arabian J. Sci. Eng.* 39 (8) (2014) 6175–6188.
- [25] S. Neti, Social media and its role in marketing, *Int. J. Enterp. Comput. Bus. Syst.* 1 (2) (2011) 1–15.
- [26] E.C. Nisbet, The engagement model of opinion leadership: testing validity within a European context., *Int. J. Public Opin. Res.* 18 (1) (2006) 3–30.
- [27] L. Page, et al., *The PageRank Citation Ranking: Bringing Order to the Web*, 1999.
- [28] A. Souri, N.J. Navimipour, Behavioral modeling and formal verification of a resource discovery approach in grid computing, *Expert Syst. Appl.* 41 (8) (2014) 3831–3849.
- [29] M.P. Venkatraman, Opinion leaders, adopters, and communicative adopters: a role analysis, *Psychol. Mark.* 6 (1) (1989) 51–68.
- [30] G. Weimann, et al., Looking for opinion leaders: traditional vs. modern measures in traditional societies, *Int. J. Public Opin. Res.* 19 (2) (2007) 173–190.
- [31] C.-N. Ziegler, G. Lausen, “Propagation models for trust and distrust in social networks, *Inf. Syst. Front.* 7 (4–5) (2005) 337–358.
- [32] Goyal, Amit, Bonchi Francesco, Laks VS Lakshmanan, Discovering leaders from community actions, in: *Proceedings of the 17th ACM conference on Information and knowledge management. ACM*, 2008.
- [33] Cascio, F. Wayne, Shurygailo Stan, E-leadership and virtual teams, *Organ. Dyn* 31 (4) (2003) 362–376.
- [34] Reppel, E. Alexander, Isabelle Szmigin, Gruber Thorsten, The iPod phenomenon: identifying a market leader's secrets through qualitative marketing research, *J. Prod. Brand Manag.* 15 (4) (2006) 239–249.
- [35] Himelboim, Itai, Gleave Eric, Smith Marc, Discussion catalysts in online political discussions: Content importers and conversation starters, *J. Comput. Mediat. Commun* 14 (4) (2009) 771–789.
- [36] Fernandez-Gago, Carmen, Agudo Isaac, Lopez Javier, Building trust from context similarity measures, *Comput. Stand. Interfaces* 36 (4) (2014) 792–800.



این مقاله، از سری مقالات ترجمه شده رایگان سایت ترجمه فا میباشد که با فرمت PDF در اختیار شما عزیزان قرار گرفته است. در صورت تمایل میتوانید با کلیک بر روی دکمه های زیر از سایر مقالات نیز استفاده نمایید:

لیست مقالات ترجمه شده ✓

لیست مقالات ترجمه شده رایگان ✓

لیست جدیدترین مقالات انگلیسی ISI ✓

سایت ترجمه فا ؛ مرجع جدیدترین مقالات ترجمه شده از نشریات معتبر خارجی